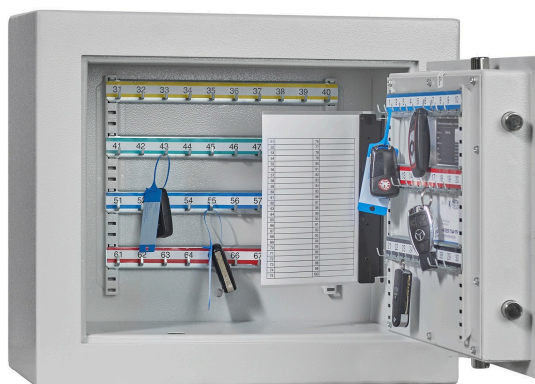


HTS 119-01

Wall-mounted key safe



Prime parameters

Size of the safe

External dimensions: 450 mm × 520 mm × 250 mm

Resistance class and insurance

Security class S2 according to EN 14450

Colour

Choose your safe's standard colour or modify it

Key lock

Key lock

Technical details

External dimensions (H x W x D)	450 mm x 520 mm x 250 mm
Internal dimensions (H x W x D)	330 mm x 400 mm x 110 mm
Weight	36 kg
Capacity	17 l
Security class	S2
Limit of protected value – home	to 30.000 €
Limit of protected value – company	to 2.500 €
Standard lock	Key lock
Size of the safe	Small
Article number	HTS 119-01
Key hooks	70
Adjustable hook slats	yes
Door opening direction	right side
Door thickness	60 mm
Door opening angle	180°
Door clearance dimensions	302 x 372 mm
Protruding door hinges/fitings	12 mm
Lacquer/Colour	light grey RAL 7035
Lock	key lock (2 keys)
Features of the lock	3-sided bolt locking system; in addition, fixed pins to protect the hinge area
More data on the body	double-wall, 60 mm thick, wrap around fire safety strip
More data on the door	double-walled, 6 mm thick plate
Adapted for anchoring in the ground	yes
Adapted for wall anchoring	yes
Equipment	- 7 adjustable hook rails, coloured and numbered, 10 hooks per rail, - key list holder